

JOIC

**JOICOLOR**



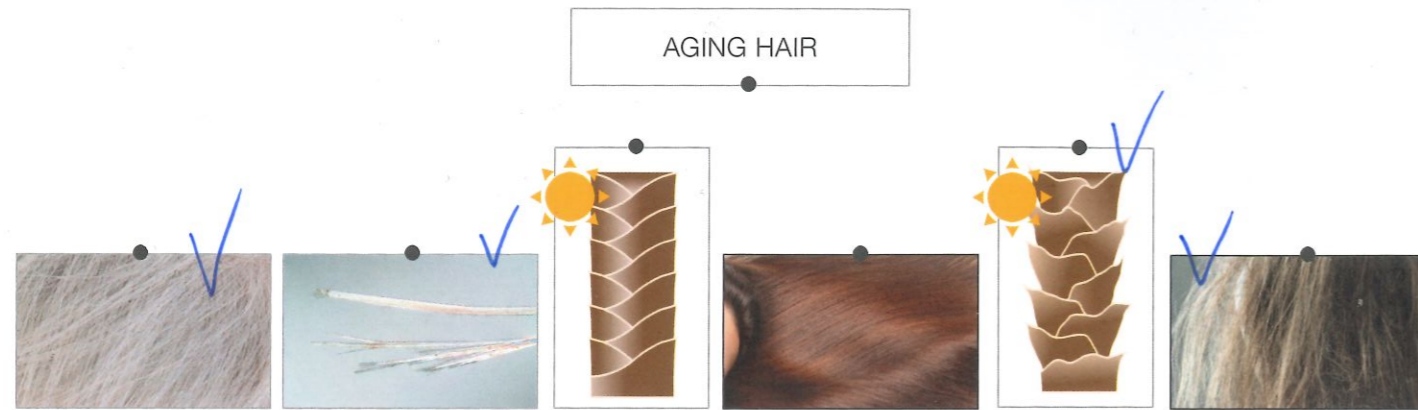
EXCELLENCE PROGRAM

**WORKBOOK MODULE 2:**

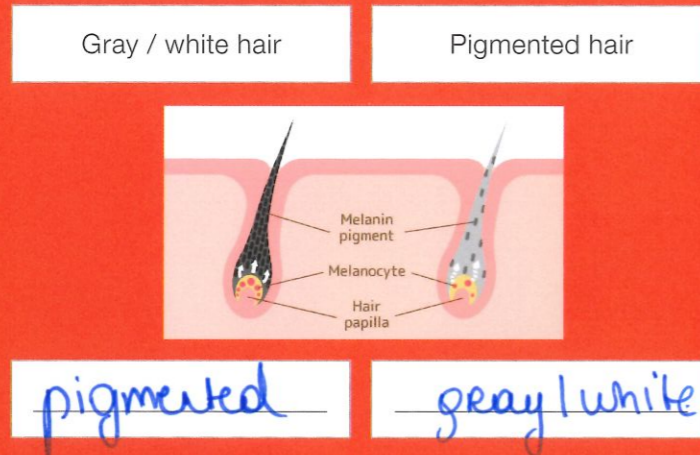
**MASTERING THE JOICOLOR PILLARS!**

# GRAY/AGING HAIR

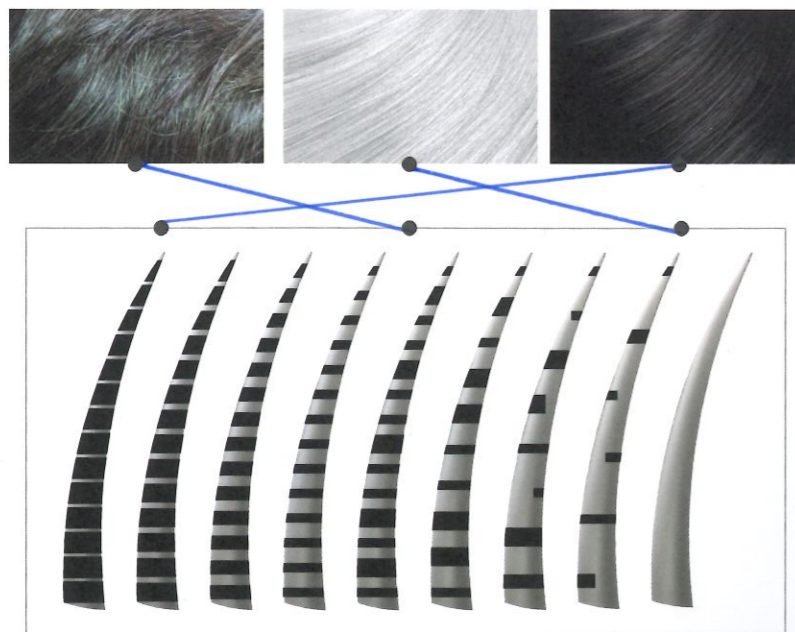
## 1. FIND THE CORRECT MATCHES



## 2. PLACE THE WORDS IN THE CORRECT SPOT



## 3. LINK THE PICTURES TO THE CORRECT SPOT



## 4. COMPLETE THE VISUAL



Argiplex: Arginine, Signature Cond., Quadr. complex



Additional Arginine: extra strength for aging hair



Buriti Fruit Oil: shine, moisture



Collagen: strength, hydration

---

---

---

---

---

---

---

---

---

---

---

---

---

---

---

---

---

---

---

---

---

---

---

---

---

---

# YOUTHLOCK families

## 1. COLOR THE RESULT

## 2. COLOR THE RESULT

---

---

---

---

---

---

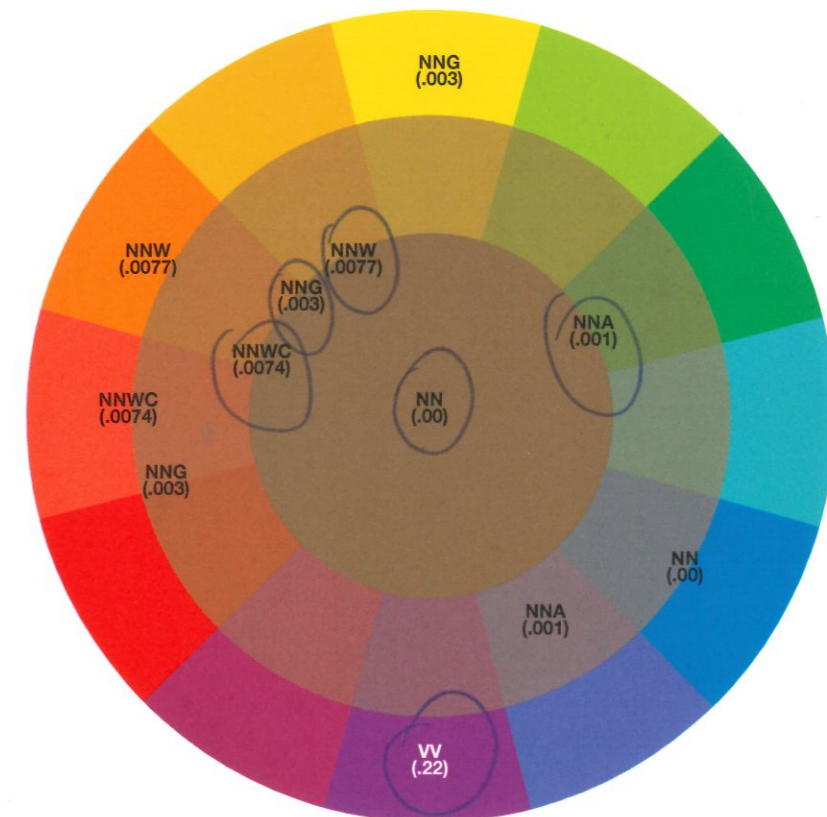
---

---

# YOUTHLOCK families

## 3. FIND THE CORRECT MATCH

## 4. WHICH ONES ARE IN THE CORRECT PLACE?



# YOUTHLOCK *instructions*

## 1. WHICH ONES ARE CORRECT?

Five boxes showing different mixing ratios and processing times:

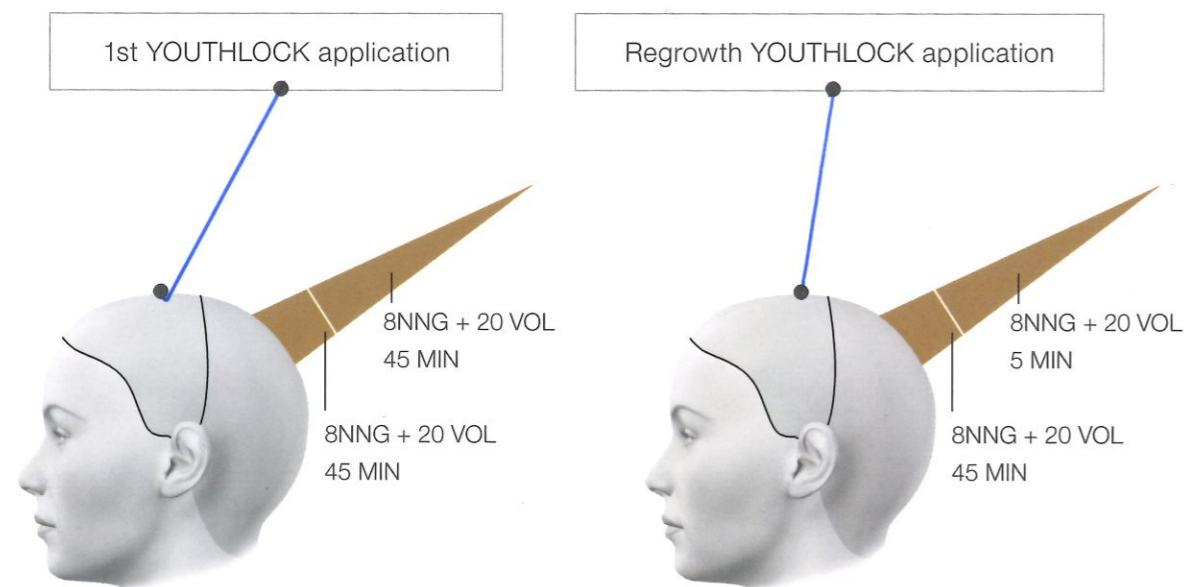
- Box 1: 1:1 ratio, 20 Vol,
- Box 2: 45 MIN processing time,
- Box 3: 35 MIN processing time,
- Box 4: 1:2 ratio, 20 Vol,
- Box 5: 1:1 ratio, 30 Vol,

## 2. WHICH ONES COVER 100% GRAY?

Five color swatches with their respective codes and checkboxes:

- Natural Natural Warm Copper .0074
- Natural Natural Ash .001
- Natural Natural Warm .0077
- Natural Natural .00
- Natural Natural Gold .003

## 3. MATCH TO THE CORRECT PICTURE



# AGE DEFY *technology*

VERO K-PAK COLOR AGE DEFY

## 4. WHICH ONES BELONG TO AGE DEFY?

Three boxes with checkboxes:

- TCD
- ArgiPlex
- 3-Defense Technology™

## 5. WHAT DOES THE + MEAN?

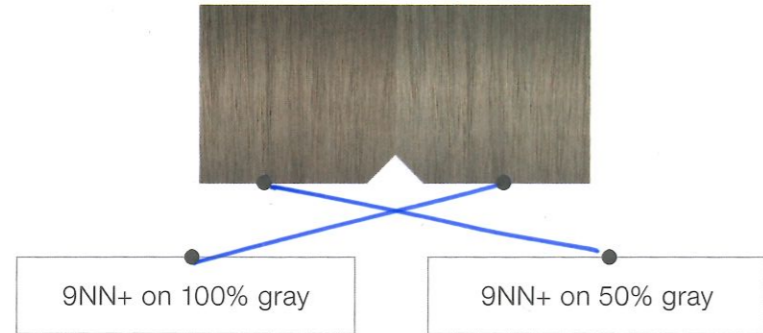


Three boxes with checkboxes and descriptions:

- More Pigment  (Illustrated with red dots)
- More Arginine  (Illustrated with a molecular structure)
- More NH3  (Illustrated with a chemical structure of ammonia)

# AGE DEFY shades

## 1. WHICH ONE BELONGS WHERE?



## 2. RANK FROM COOLEST (1) TO WARMEST (8)

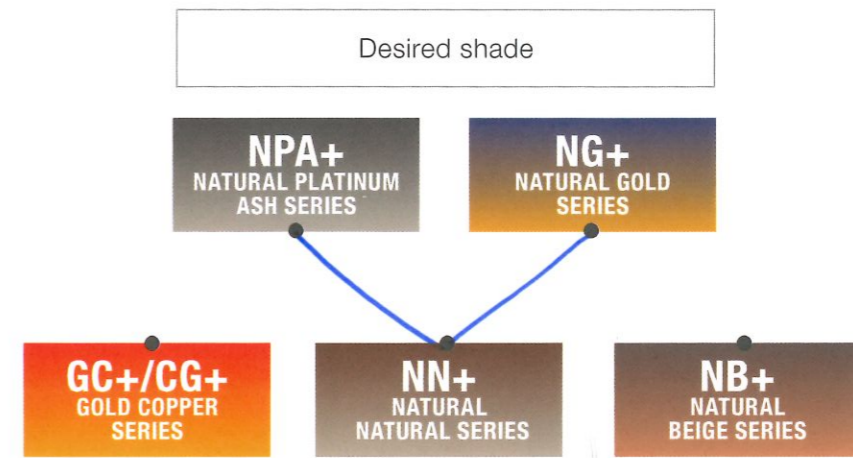


# AGE DEFY shades

## 4. WHICH ONES COVER 100% GRAY?

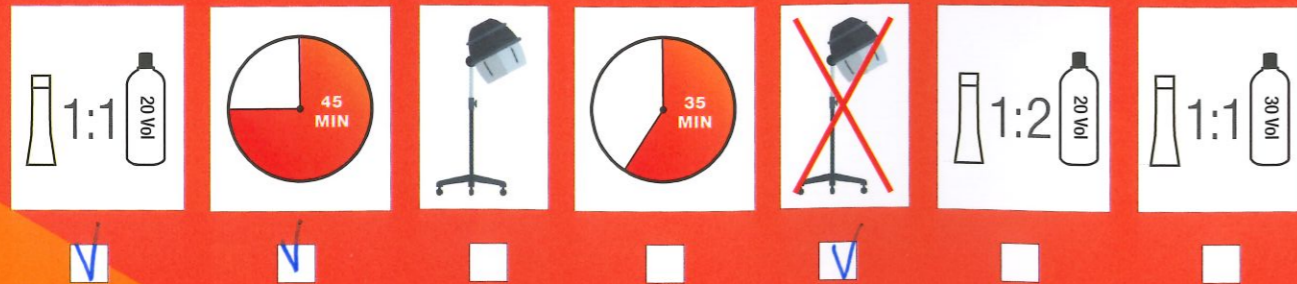


## 5. WHAT TO MIX FOR 100% COVERAGE?



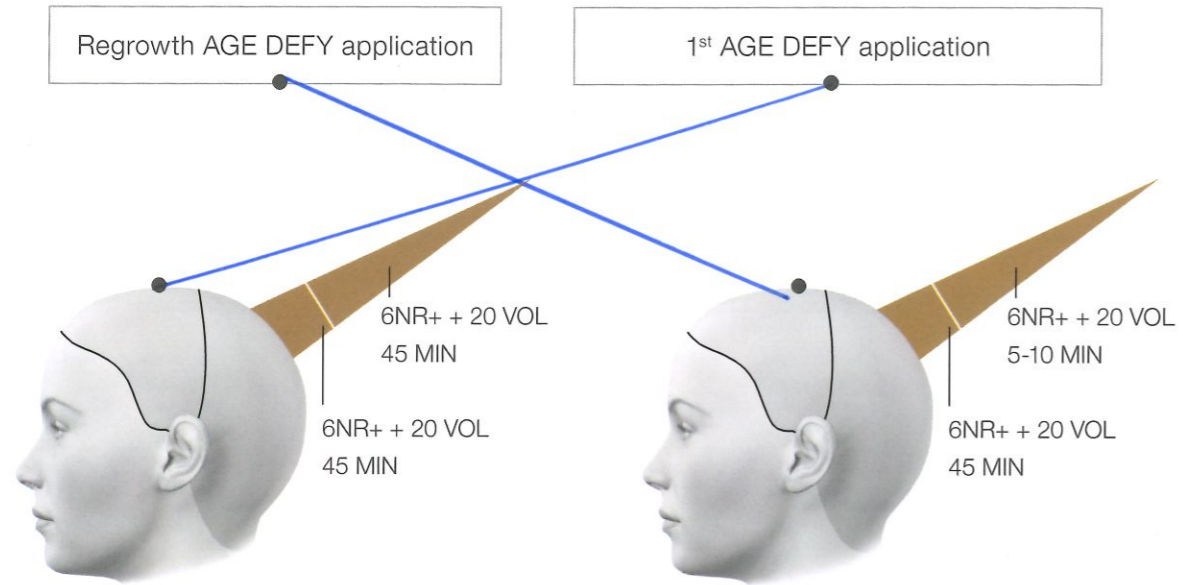
# AGE DEFY instructions

## 3. WHICH ONES ARE CORRECT?



# AGE DEFY *instructions*

## 1. MATCH TO THE CORRECT PICTURE




---

---

---

---

---

---

---

---

---

---

---

---

---

---

---

---

---

---

---

---

---

---

---

---

---

# TARGET GROUP

## 2. MARK THE ANTI-AGING COLOR CLIENTS

