

DICO

JOICOLOR

EXCELLENCE PROGRAM

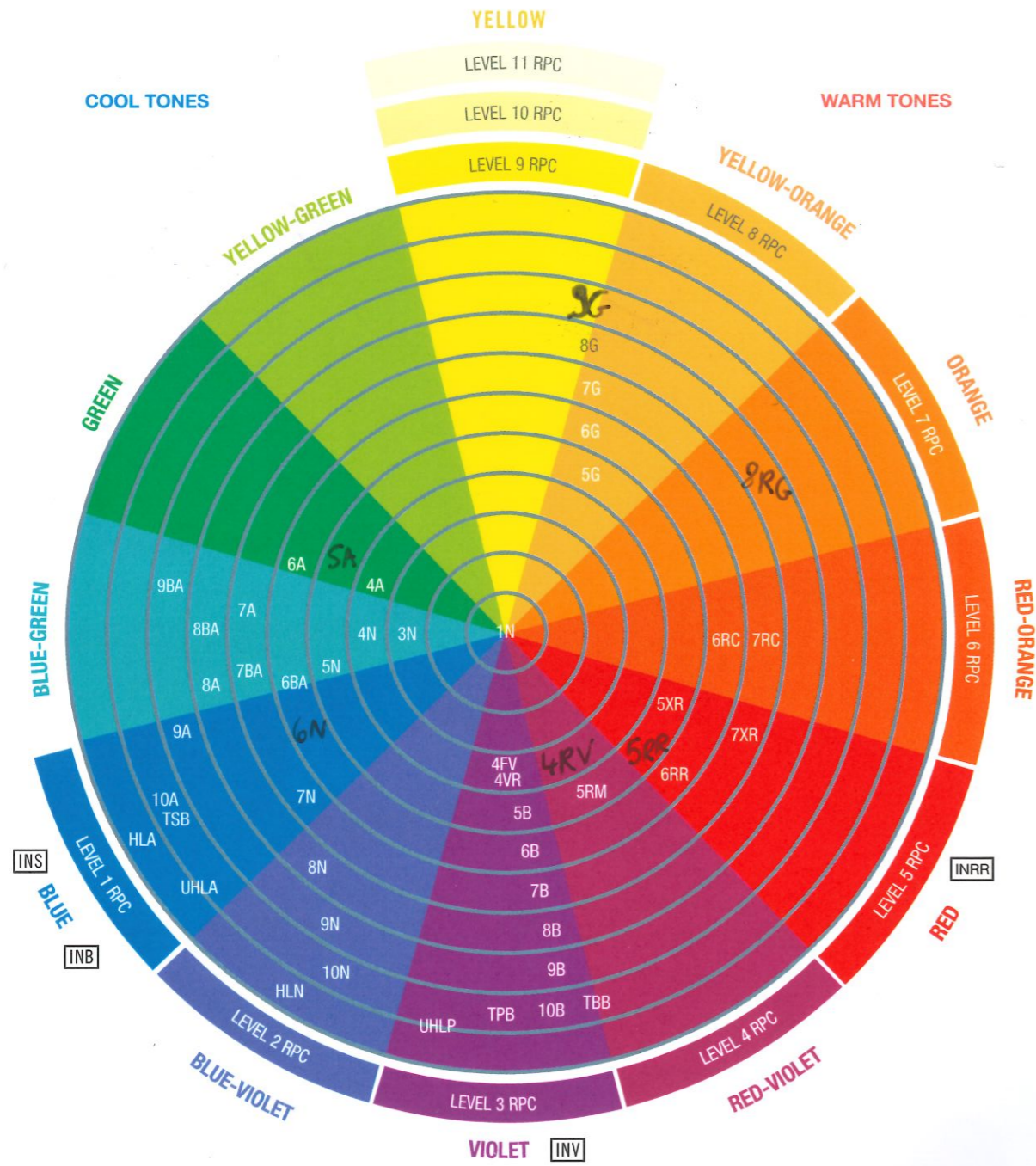
WORKBOOK MODULE 2:

MASTERING THE JOICOLOR PILLARS!

COLOR WHEEL

1. PUT THE MISSING SHADES ON THE WHEEL

8RG - 5RR - 4RV - ~~V9~~ - 6N - 5A - 9G



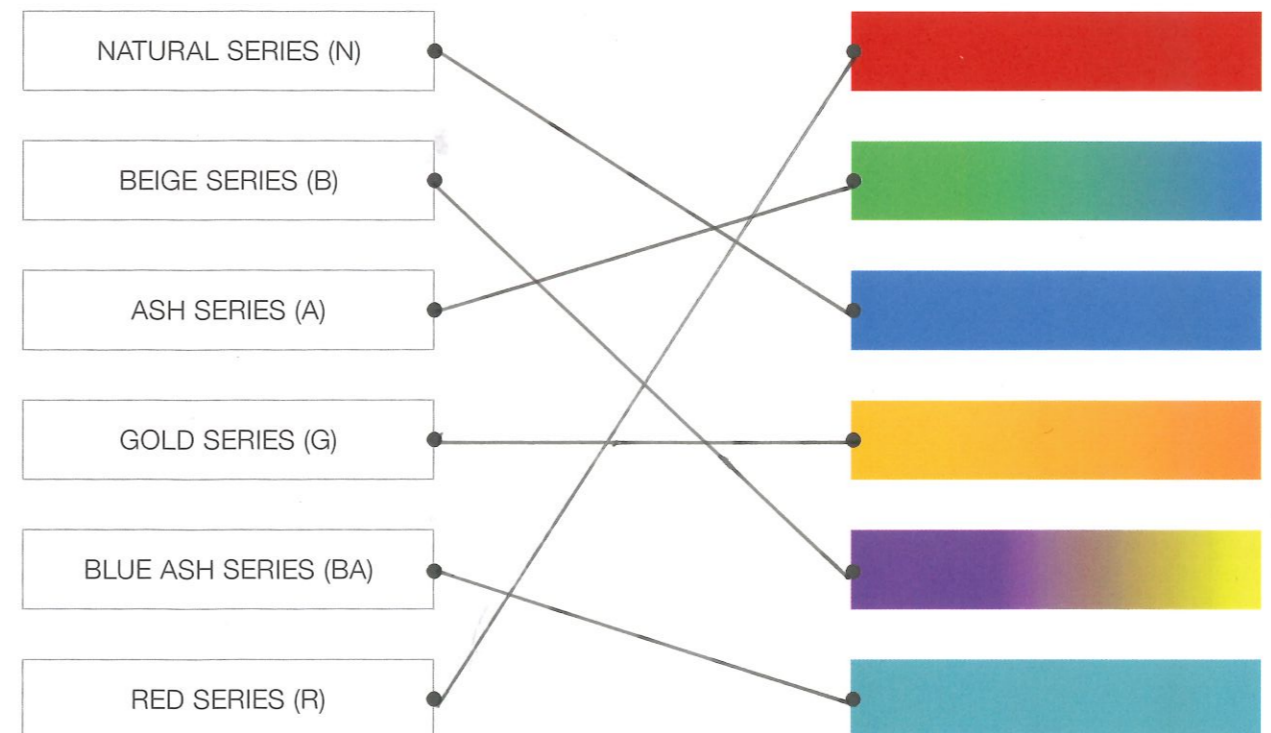
LEVELS & RPC

2. COLOR THE CELLS

Level number	Level description	Remaining Pigment
11	Palest Blond	Yellow/White
10	Pale Blond	Pale Yellow
9	Light Blond	Yellow
8	Medium Blond	Yellow/Orange
7	Dark Blond	Orange
6	Light Brown	Red/Orange
5	Medium Brown	Red
4	Dark Brown	Red/Violet
3	Darkest Brown	Violet
2	Brown/Black	Blue/Violet
1	Black	Blue

COLOR PALETTE *tonal families*

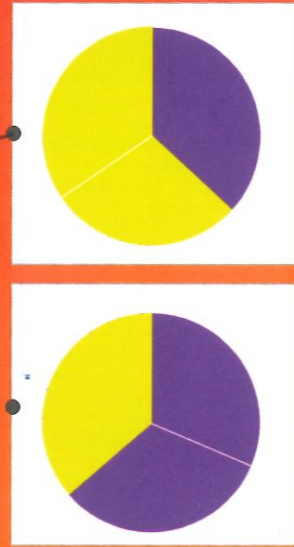
3. CONNECT THE CORRECT BOXES



COLOR PALETTE *tonal families*

1. WHICH ONE IS CORRECT

BEIGE SERIES (B)



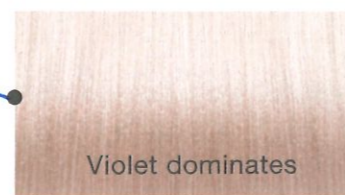
2. WHAT WILL HAPPEN?



ON

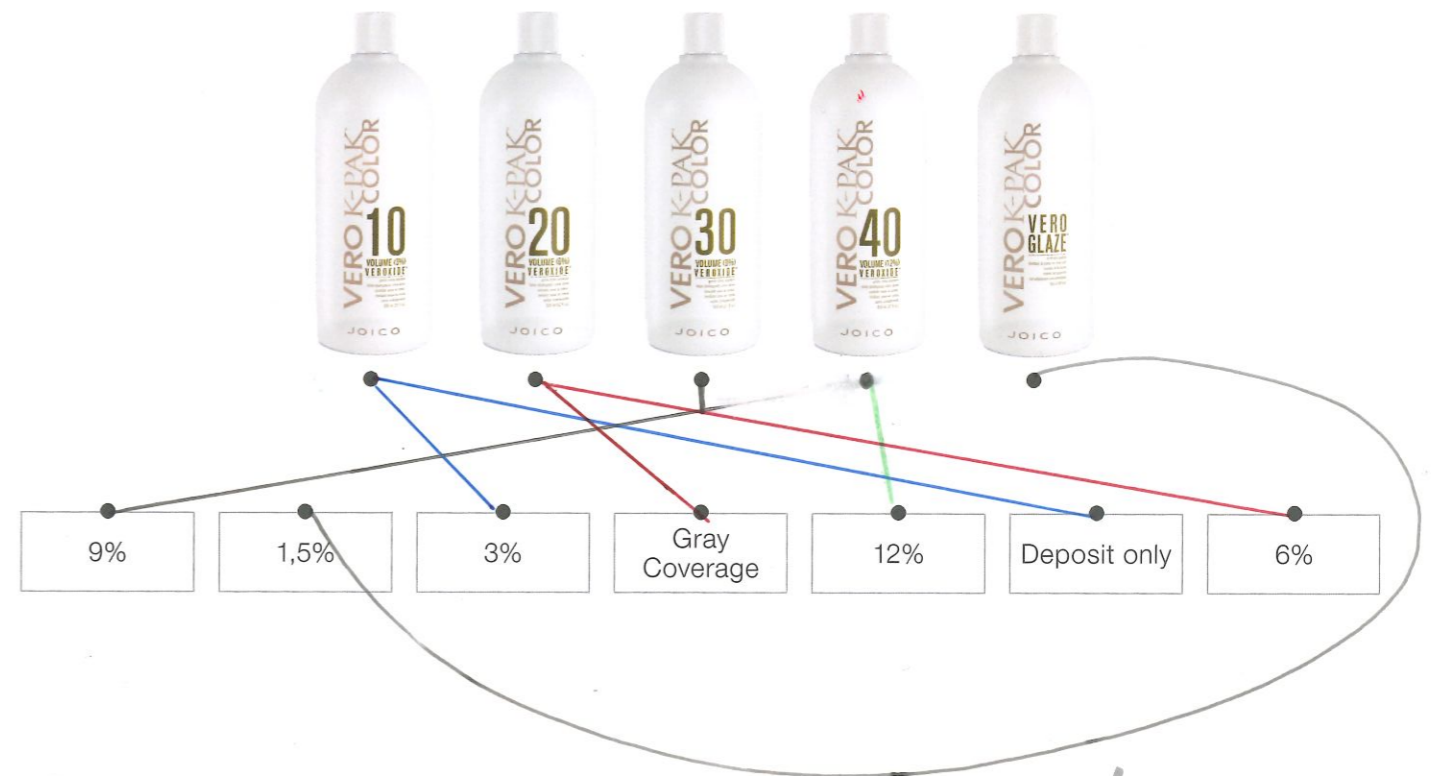


=



DEVELOPERS *veroxides*

3. CONNECT



INSTRUCTIONS *mixing ratio*

4. COMPLETE



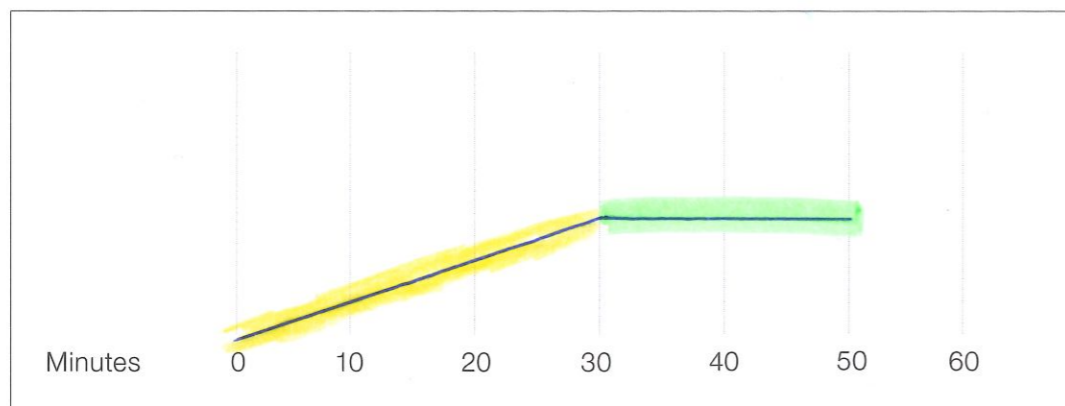
INSTRUCTIONS *timing*

1. CONNECT



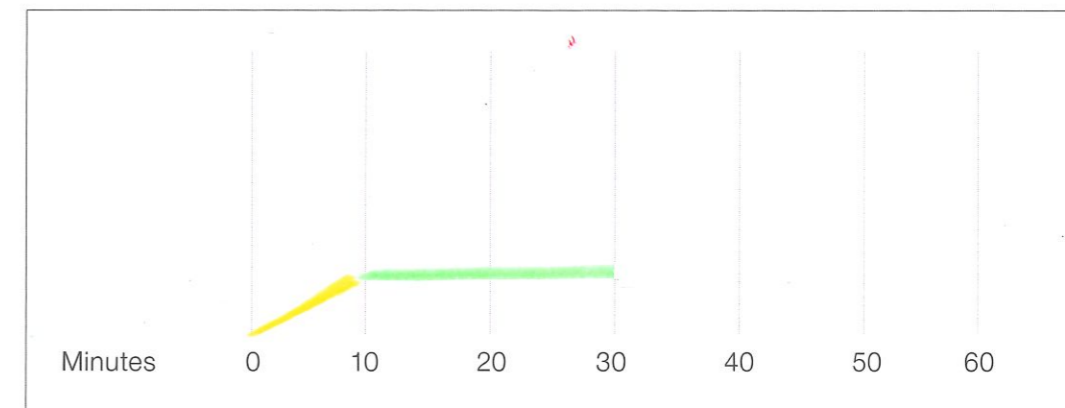
ALL OF THEM

2. DRAW THE LIFT & DEPOSIT TIME



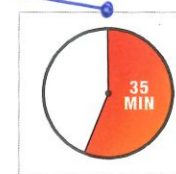
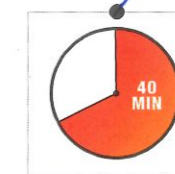
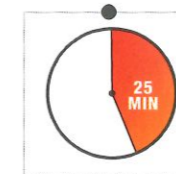
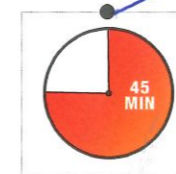
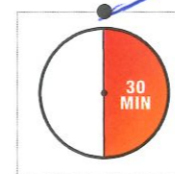
INSTRUCTIONS *timing*

3. DRAW THE LIFT & DEPOSIT TIME



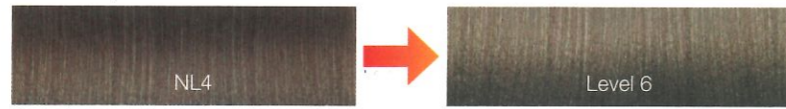
TIMING *exercise*

4. CONNECT TO THE CORRECT PROCESSING TIME



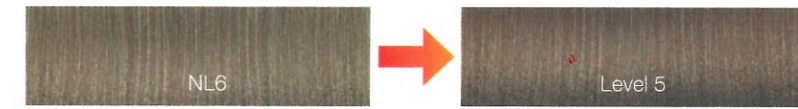
DEVELOPERS *lifting ability*

1. WHICH ONE DO YOU NEED?



DEVELOPERS *lifting ability*

3. WHICH ONE DO YOU NEED?

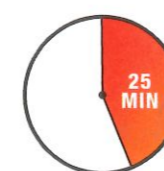


2. WHICH ONE DO YOU NEED?



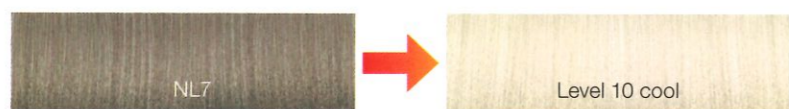
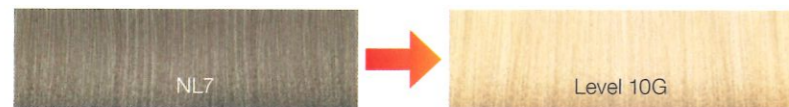
INSTRUCTIONS

4. CONNECT TO THE CORRECT PICTURES



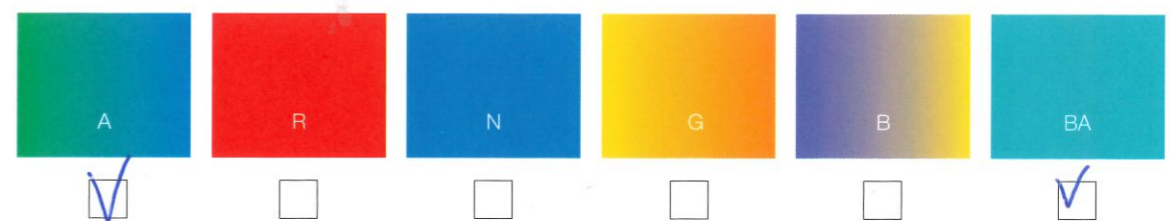
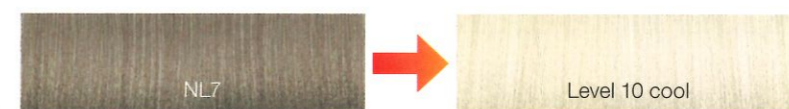
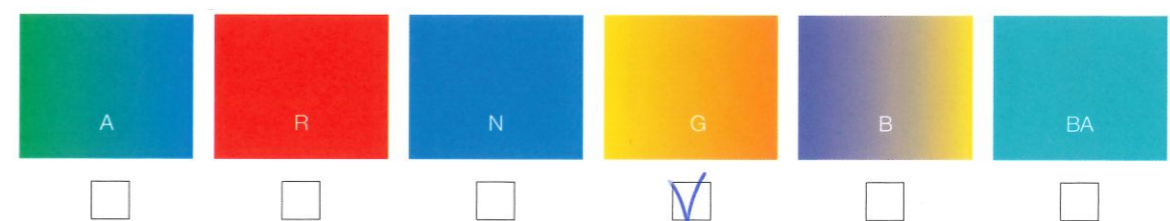
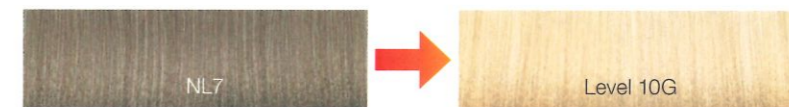
DEVELOPERS *lifting ability*

1. WHICH ONE DO YOU NEED?



EXERCISE *lift*

2. WHICH ONE DO YOU NEED?



INSTRUCTIONS *intensifiers*

1. WHICH ONE IS CORRECT?

- 30 ML 5RR + 5 CM INRR + 35 ML 20 VOLUME
- 30 ML 5RR + 3 CM INRR + 30 ML 20 VOLUME

INSTRUCTIONS *gray coverage*

2. WHICH ONES ARE GRAY COVERAGE BASE CHOICES?

- Ash Series (A)
- Red Series (R)
- Natural Series (N)
- Gold Series (G)
- Beige Series (B)
- Blue Ash Series (BA)

3. HOW MANY TO MIX FOR COVERAGE?



- 1 tube
- 2 tubes
- 3 tubes

INSTRUCTIONS *gray coverage*

4. HOW MANY TO MIX FOR COVERAGE?



- 1 tube
- 2 tubes
- 3 tubes

5. WHICH TONAL SERIES CAN COVER THESE 2 CLIENTS ON THEIR OWN?



- Ash Series (A)
- Cool Red Series (R)
- Warm Red Series (R)
- Natural Series (N)
- Gold Series (G)
- Beige Series (B)
- Blue Ash Series (BA)

COLOR PALETTE *hl & uhl*

1. LINK TO THE CORRECT BOXES



COLOR PALETTE *toner series*

2. LINK TO THE CORRECT BOXES



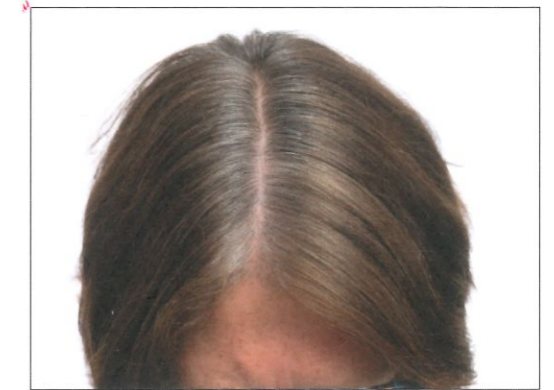
FORMULATIONS *exercise*

3. WHAT IS THE FORMULA?

50% gray
Desired result: level 6 Copper
Natural level 6

FORMULA:

example: 6RC + 20vol



4. WHAT IS THE FORMULA?

0% gray
Desired result: level 6 natural brown
Natural level 5

FORMULA:

*6BA + 20vol OR
6N + 6A + 20vol*



5. WHAT IS THE FORMULA?

0% gray
Desired result: level 6 cool brown
Natural level 5

FORMULA:

*6BA + 30vol OR
6N + 6A + 30vol*



