

JOICO

COLOR

EXCELLENCE PROGRAM

# WORKBOOK MODULE 2:

## MASTERING THE JOICOLOR PILLARS!

**THE MAGIC OF PURE TONE COLOR**  
**VERO K-PAK COLOR**

**JOICO**  
the **joi** of healthy hair







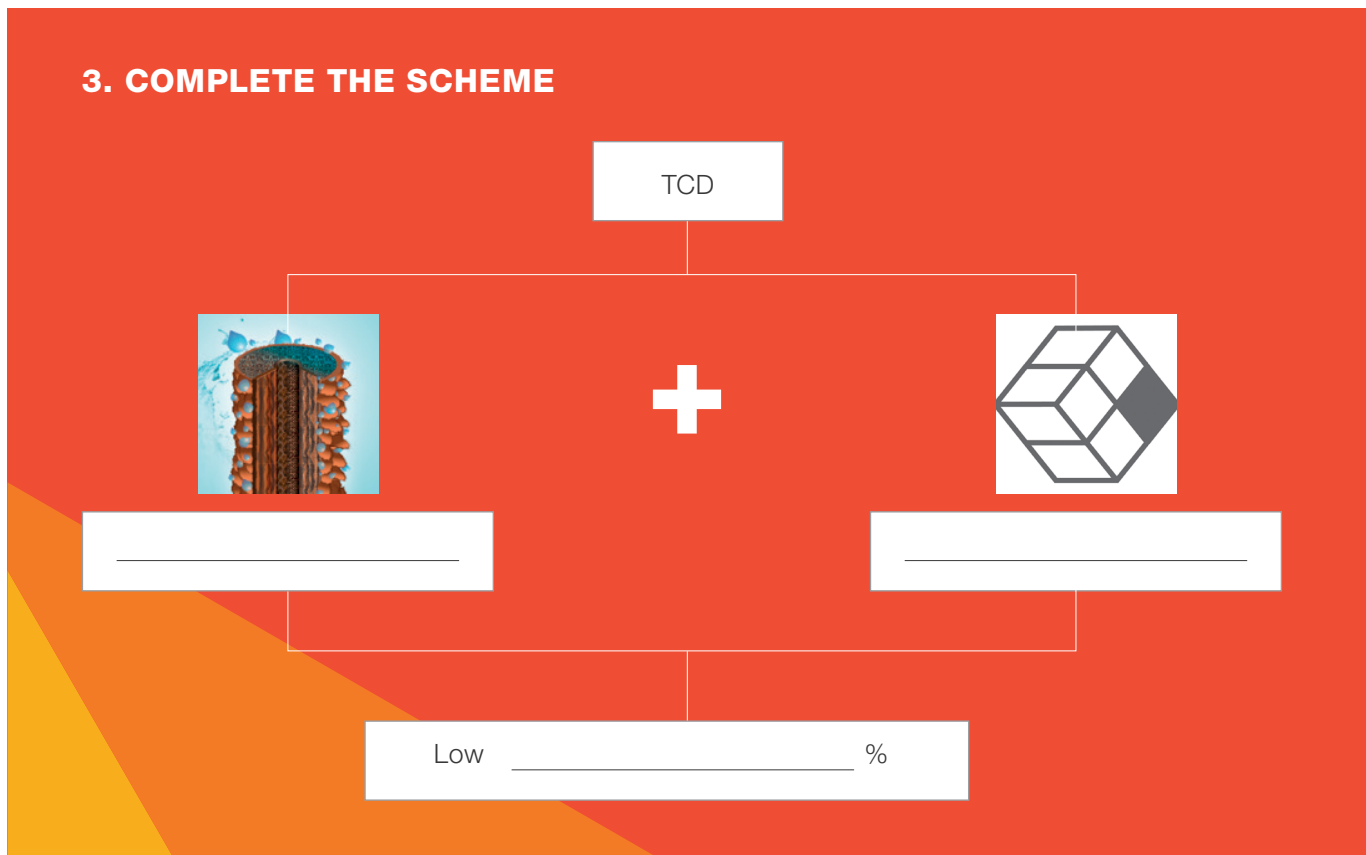
# TECHNOLOGY

## 2. MULTIPLE CHOICE

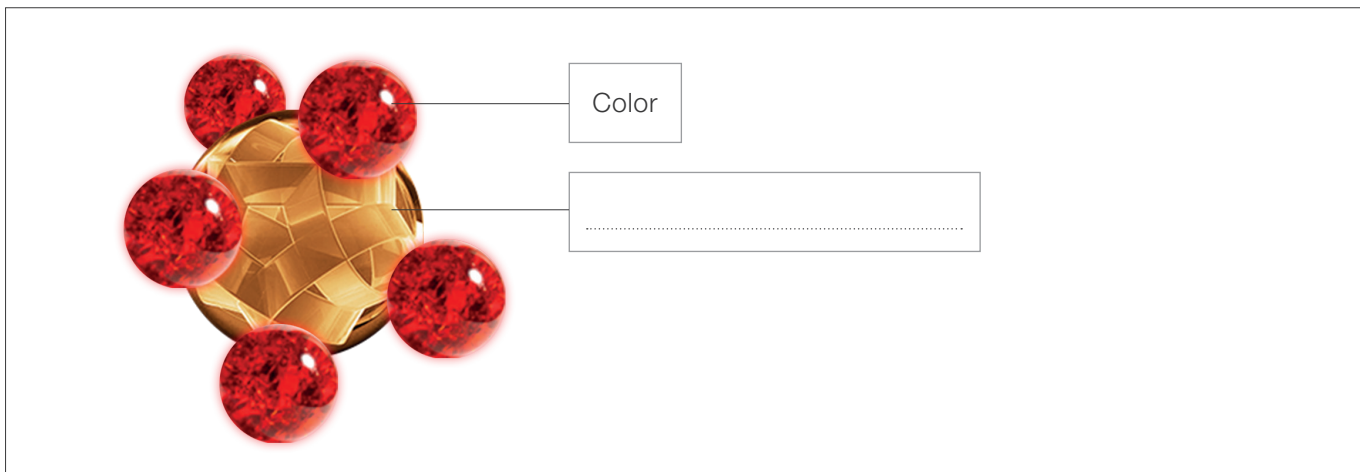
TCD

- A Trans-Cuticle Delivery System
- B Trans-Cortex Delivery System
- C Triple-Color Deliverance System
- D Through-Cuticle Delivery System

## 3. COMPLETE THE SCHEME



## 4. COMPLETE THE BLANC BOX. CHOOSE BETWEEN: LECITHIN - LYSINE










# LEVELS & RPC

## 2. COLOR THE CELLS

Level number	Level description	Remaining Pigment
11	Palest Blond	Yellow/White
10	Pale Blond	Pale Yellow
9	Light Blond	Yellow
8	Medium Blond	Yellow/Orange
7	Dark Blond	Orange
6	Light Brown	Red/Orange
5	Medium Brown	Red
4	Dark Brown	Red/Violet
3	Darkest Brown	Violet
2	Brown/Black	Blue/Violet
1	Black	Blue

# COLOR PALETTE *tonal families*

## 3. CONNECT THE CORRECT BOXES

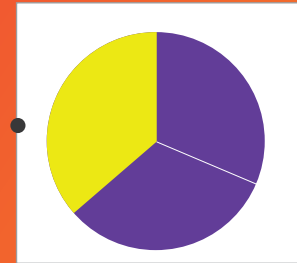
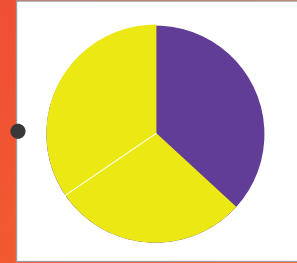
NATURAL SERIES (N)	
BEIGE SERIES (B)	
ASH SERIES (A)	
GOLD SERIES (G)	
BLUE ASH SERIES (BA)	
RED SERIES (R)	



# COLOR PALETTE *tonal families*

## 1. WHICH ONE IS CORRECT

BEIGE SERIES (B)



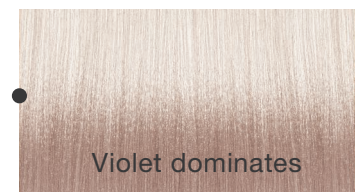
## 2. WHAT WILL HAPPEN?



ON



=





# DEVELOPERS *veroxides*

## 3. CONNECT



# INSTRUCTIONS *mixing ratio*

## 4. COMPLETE

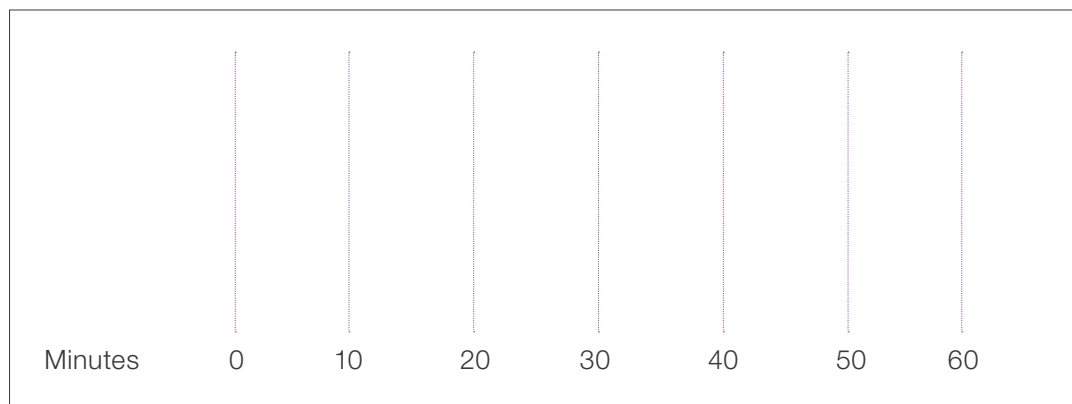


# INSTRUCTIONS *timing*

## 1. CONNECT

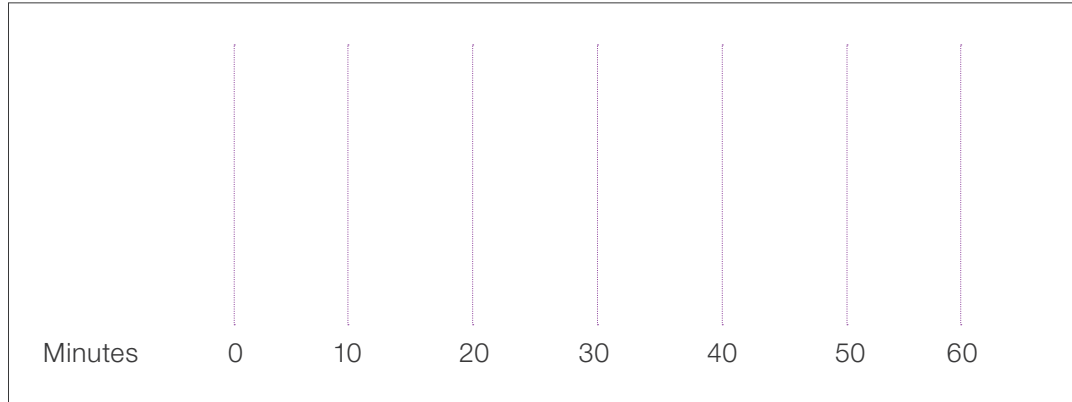


## 2. DRAW THE LIFT & DEPOSIT TIME



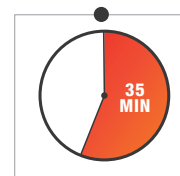
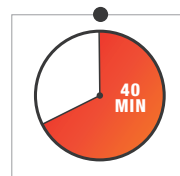
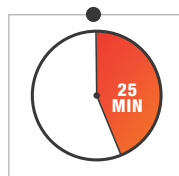
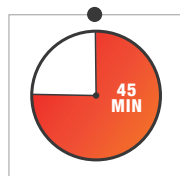
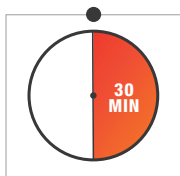
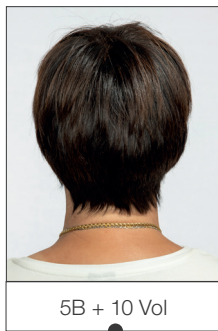
# INSTRUCTIONS *timing*

## 3. DRAW THE **LIFT** & **DEPOSIT** TIME



# TIMING *exercise*

## 4. CONNECT TO THE CORRECT PROCESSING TIME



# DEVELOPERS *lifting ability*

## 1. WHICH ONE DO YOU NEED?



## 2. WHICH ONE DO YOU NEED?



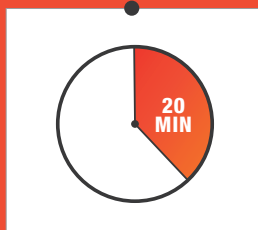
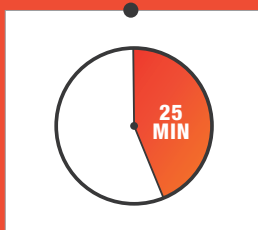
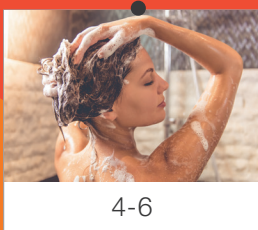
# DEVELOPERS *lifting ability*

## 3. WHICH ONE DO YOU NEED?



# INSTRUCTIONS

## 4. CONNECT TO THE CORRECT PICTURES





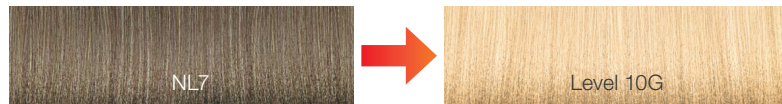
# DEVELOPERS *lifting ability*


## 1. WHICH ONE DO YOU NEED?




# EXERCISE *lift*

## 2. WHICH ONE DO YOU NEED?



					
A	R	N	G	B	BA
<input type="checkbox"/>	<input type="checkbox"/>	<input type="checkbox"/>	<input type="checkbox"/>	<input type="checkbox"/>	<input type="checkbox"/>



					
A	R	N	G	B	BA
<input type="checkbox"/>	<input type="checkbox"/>	<input type="checkbox"/>	<input type="checkbox"/>	<input type="checkbox"/>	<input type="checkbox"/>

# INSTRUCTIONS *intensifiens*

## 1. WHICH ONE IS CORRECT?

30 ML 5RR + 5 CM INRR + 35 ML 20 VOLUME

30 ML 5RR + 3 CM INRR + 30 ML 20 VOLUME

# INSTRUCTIONS *gray coverage*

## 2. WHICH ONES ARE GRAY COVERAGE BASE CHOICES?

Ash  
Series (A)

Red  
Series (R)

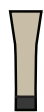
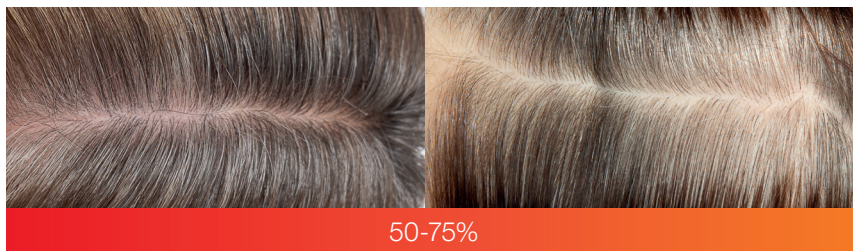
Natural  
Series (N)

Gold  
Series (G)

Beige  
Series (B)

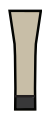
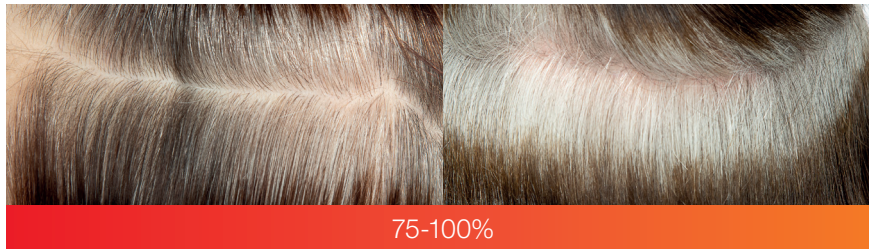
Blue Ash  
Series (BA)

## 3. HOW MANY TO MIX FOR COVERAGE?

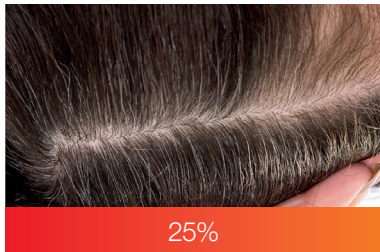


# INSTRUCTIONS *gray coverage*

## 4. HOW MANY TO MIX FOR COVERAGE?



## 5. WHICH TONAL SERIES CAN COVER THESE 2 CLIENTS ON THEIR OWN?



25%



50%

Ash Series (A)

Cool Red Series (R)

Warm Red Series (R)

Natural Series (N)

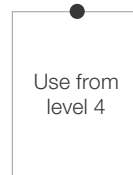
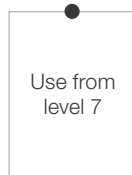
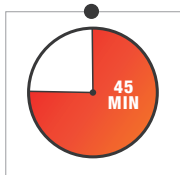
Gold Series (G)

Beige Series (B)

Blue Ash Series (BA)

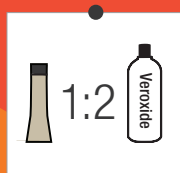
# COLOR PALETTE *hl & uhl*

## 1. LINK TO THE CORRECT BOXES



# COLOR PALETTE *toner series*

## 2. LINK TO THE CORRECT BOXES





# FORMULATIONS *exercise*

## 3. WHAT IS THE FORMULA?

50% gray  
Desired result: level 6 Copper  
Natural level 6

**FORMULA:**

---

---

---



## 4. WHAT IS THE FORMULA?

0% gray  
Desired result: level 6 natural brown  
Natural level 5

**FORMULA:**

---

---

---



## 5. WHAT IS THE FORMULA?

0% gray  
Desired result: level 6 cool brown  
Natural level 5

**FORMULA:**

---

---

---



# PRE- & POST COLOR

## 3. FIND THE LINKS

Damage Prevention

Repair damaged hair



## 4. PLACE IN THE CORRECT ORDER

Damage Prevention



---

---

---

---

---

---

---

---

---

---









**JOICO**  
the **joi** of healthy hair

**WWW.JOICO.EU #JOICOEUROPE**

Henkel Nederland B.V. - JOICO | Grasbeemd 4 | 5705 DG | Helmond | The Netherlands